

REVITALIZATION PLAN OF THE HISTORICAL CENTER OF SAMARKANDA

LOCATION / CLIENT

Samarkanda, Uzbekistan Republic
Aga Khan Foundation– Uzbekistan College

PROGRAM

- Shopping Center
- Tourism Services
- Library
- Museum Areas
- Arts Academy
- Mosque
- Astronomic Observatory
- Linear Market
- Conventional Hall
- Hotels

COMPETITION

International Competition (honourable mention)

PROJECT

1991

CONSTRUCTION AREA

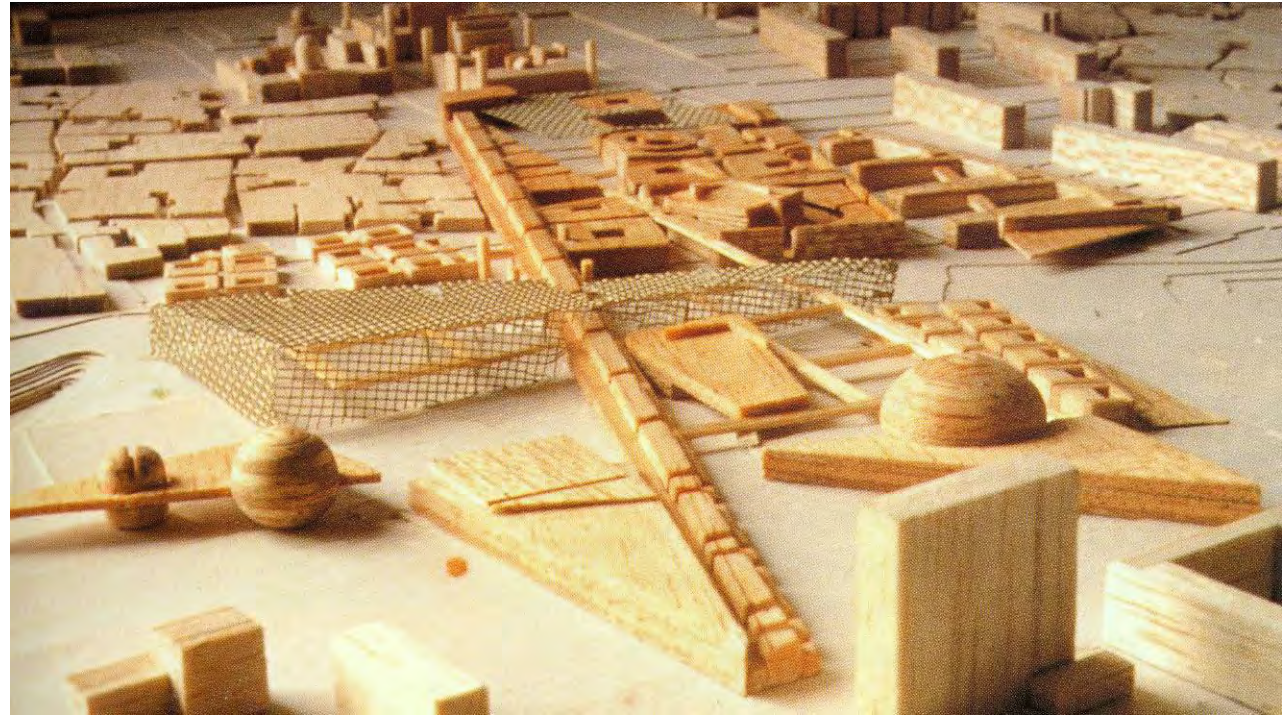
76 000m²

PROJECT

José Santa-Rita, João Santa-Rita

PROJECTS INVOLVED

- Landscape
- Infrastructures
- Acoustic
- Traffic



URBAN AND FUNCTIONAL REHABILITATION PLAN OF CACILHAS

LOCATION

Almada, Portugal

CLIENT

Almada Town Hall
Companhia de Seguros Império

PROGRAM

- housing
- offices
- commercial areas
- infrastructures
- cinemas
- museums
- interface transportes
- fluvial terminal

COMPETITION (1998)

International Competition, 6th Prize

CONSTRUCTION COSTS

50 000 000 Euro

CONSTRUCTION AREA

60 000m²

PROJECT

João Santa-Rita, David Mackay, Luís Cabral

PROJECTS INVOLVED

Landscapes
Infrastructures
Acoustic
Traffic



TELECEL HEADQUARTERS

LOCATION

Expo 98, Lisboa

CLIENT

Telecel

PROGRAM

- auditorium (100 lug)
- megastore
- offices

COMPETITION (1999)

Limited Competition

CONSTRUCTION_COSTS

51 500 000 euros

CONSTRUCTION AREA

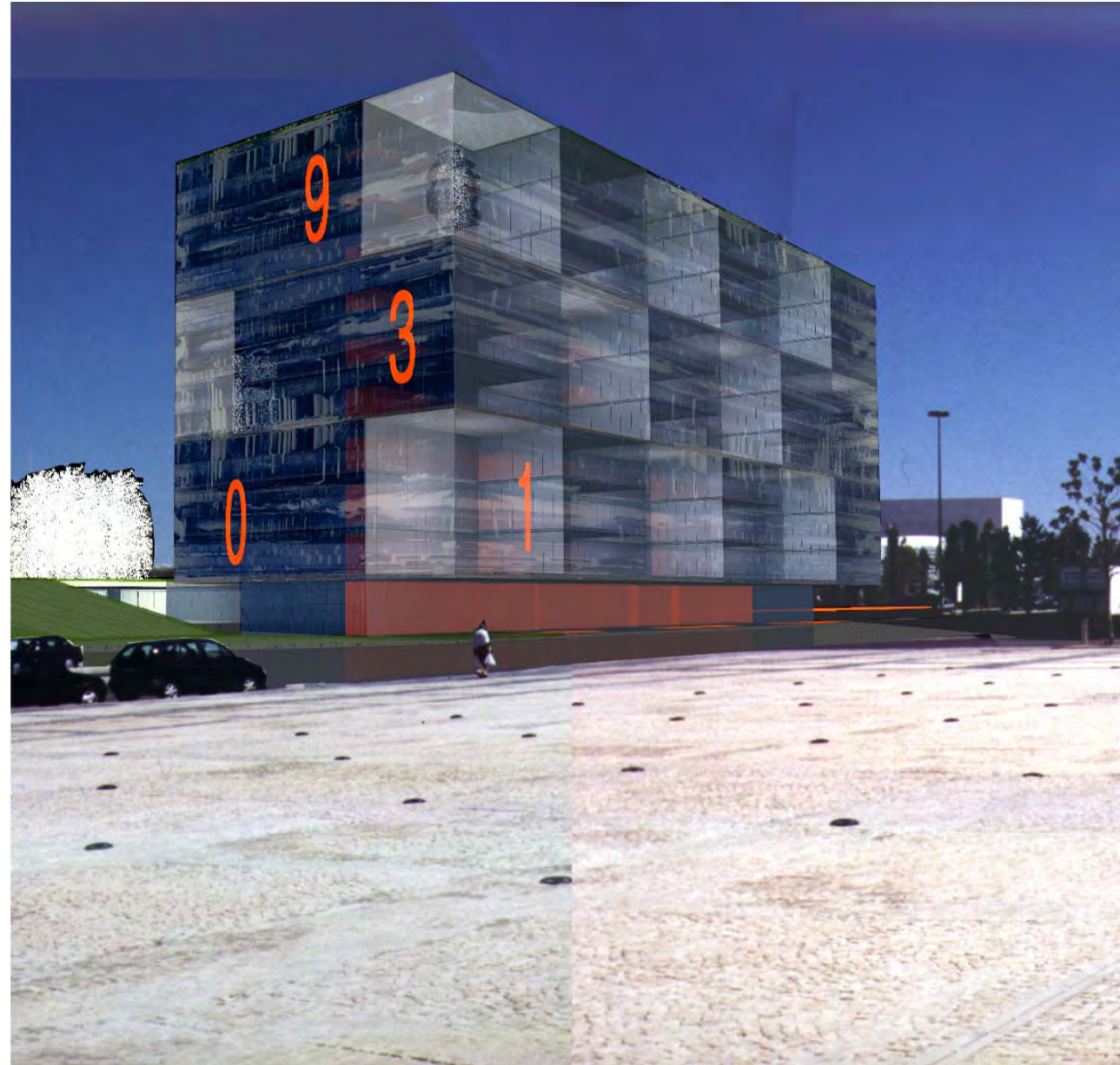
60 000m²

PROJECT

José Santa-Rita, João Santa-Rita

PROJECTS INVOLVED

- Structure
- Water and sewer
- Electricity / Communications
- Security
- Air conditioned / Ventilation
- Acoustic
- Thermal
- Mechanical
- Traffic
- Landscape design



NATIONAL MUSEUM MACHADO DE CASTRO

LOCATION / CLIENT

Coimbra, Portugal / Portuguese Institute of Museums

PROGRAM

- Exhibition areas
- Auditorium
- Library
- Educational services
- Offices spaces
- Stall area
- Restoration workshops

COMPETITION (1999)

Limited International Competition
2nd Stage (3rd Prize ex aequo)

CONSTRUCTION COSTS

8 720 800 euros

CONSTRUCTION AREA

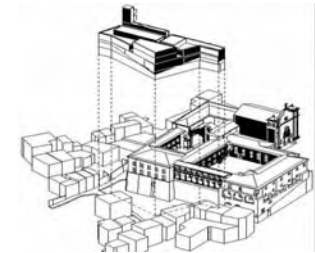
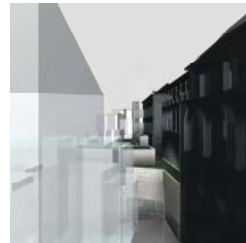
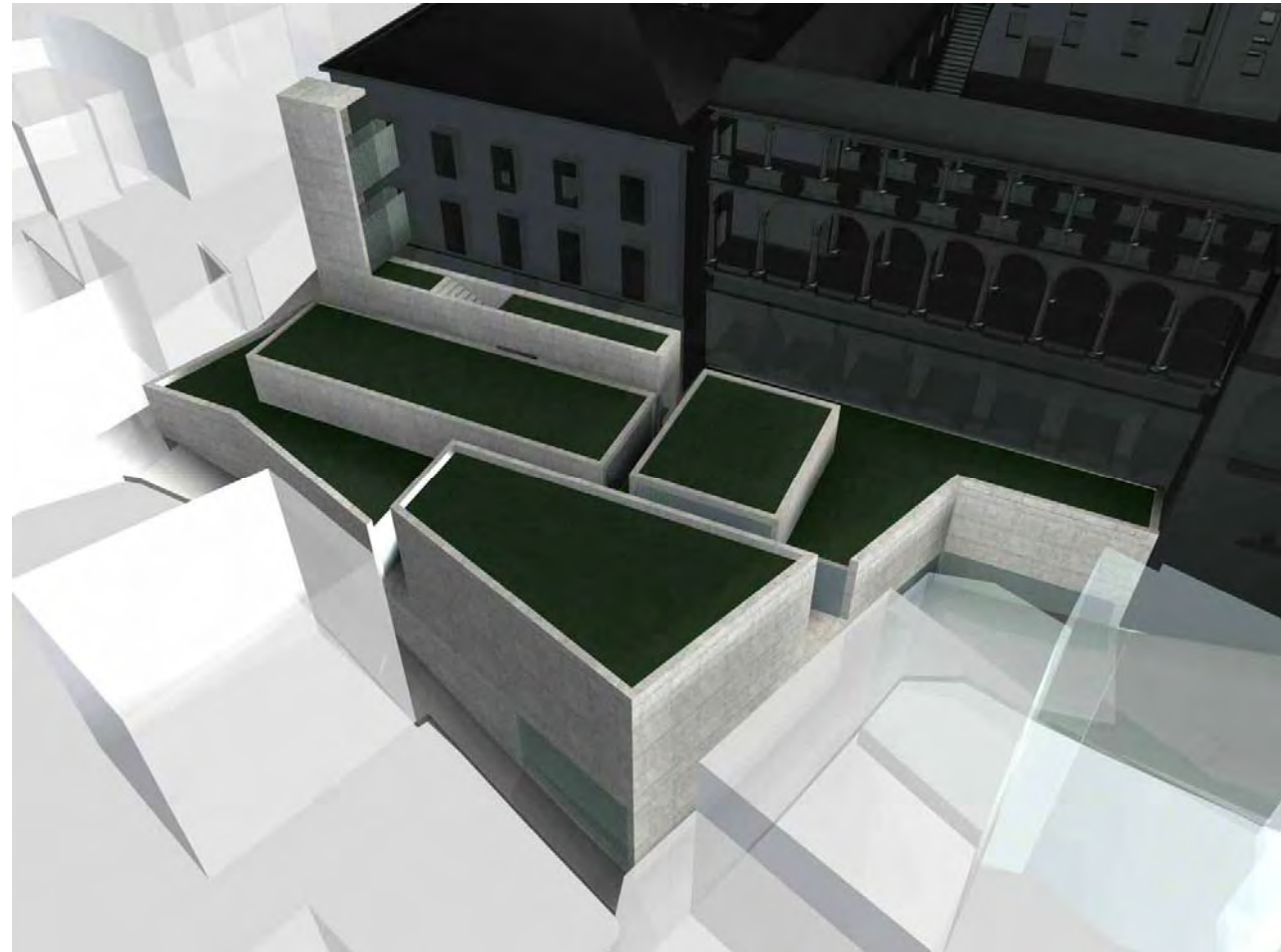
9 280m²

PROJECT

José Santa-Rita, João Santa-Rita

PROJECT INVOLVED

- Structure
- Water and sewer
- Electricity / Communications
- Security
- Air conditioned / Ventilation
- Acoustic
- Thermal
- Mechanical
- Landscape design



CASINO AND HOTEL COMPLEX

LOCATION

Tróia, Portugal

CLIENT

Sonae, Tourism

PROGRAM

- hotel
- casino
- conference center
- auditorium
- parking areas
- apartments
- health club

COMPETITION (2000)

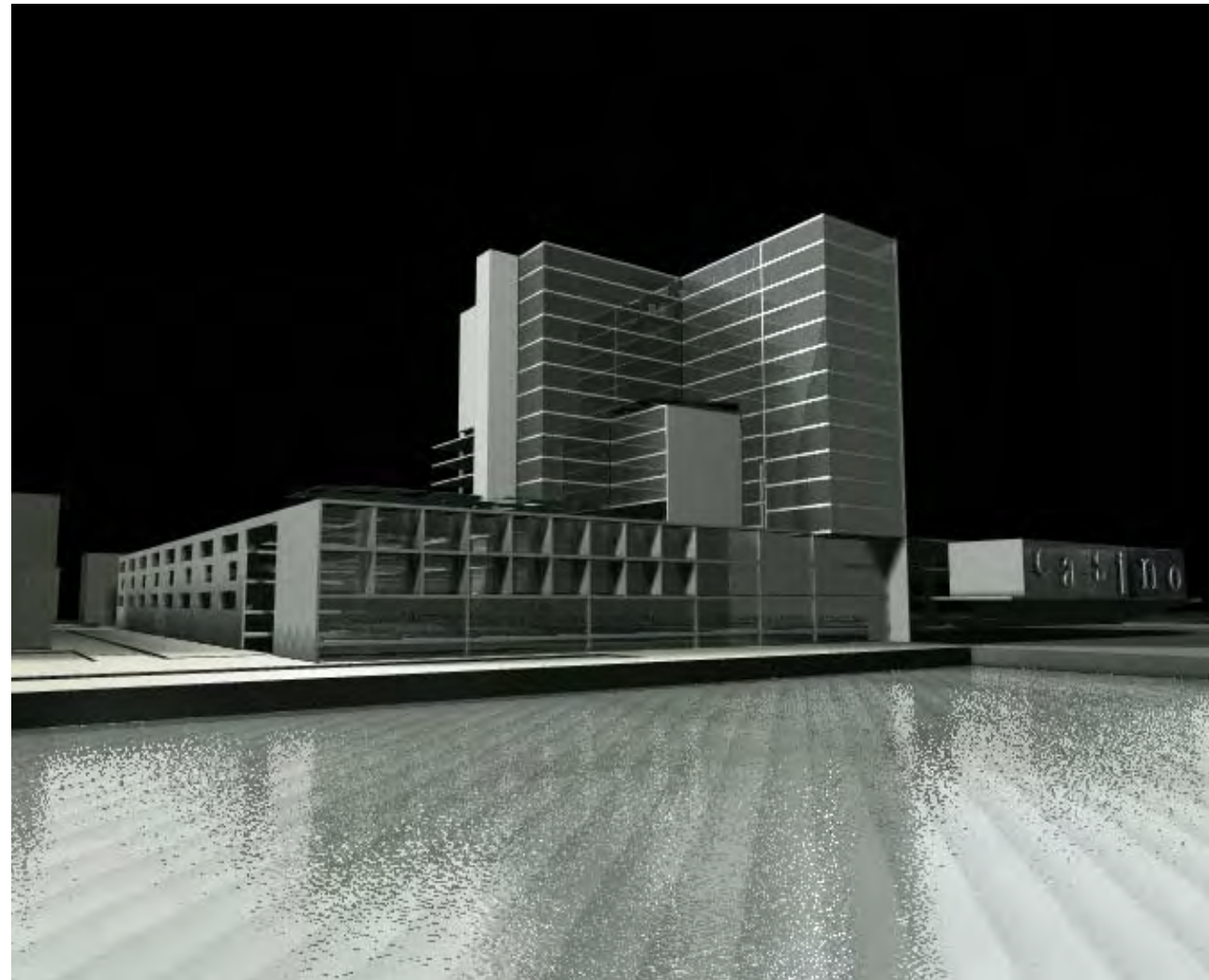
Limited Competition

PROJECT

José Santa-Rita, João Santa-Rita
Duarte Nuno Simões, Nuno Simões

PROJECT INVOLVED

- Structure
- Water and sewer
- Electricity / Communications
- Security
- Air conditioned / Ventilation
- Acoustic
- Thermal
- Mechanical
- Traffic
- Landscape design



**OFFICE, COMMERCIAL AND HOUSING
BUILDING**

LOCATION

Avenida Marechal Gomes da Costa, Lisbon

CLIENT

Sousa Lima Group

PROGRAM

- Office
- Parking
- Commercial

INVITATION

PROJECT

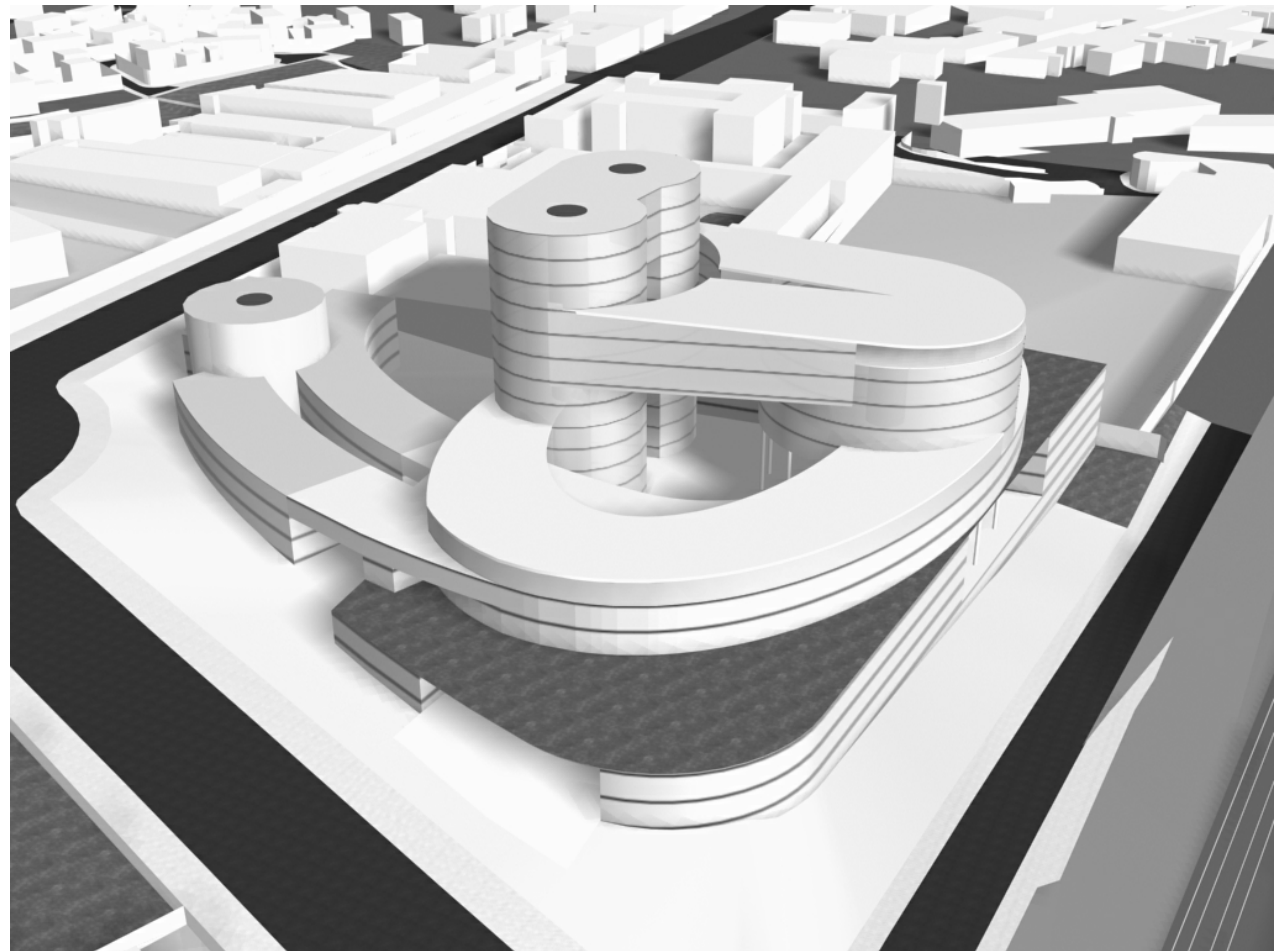
2000/...

CONSTRUCTION AREA

40 000m² +
30 000 m² parking

PROJECT

Author - Manuel Vicente Architect
Co – Author – João Santa-Rita



COMPLEX OF MORTUARY HOUSES

LOCATION

Largo da Ermida de Santo André, Beja, Portugal

CLIENT

Beja Town Hall

PROGRAM

- Hall
- Mortuary houses
- Social areas

COMPETITION

Limited Competition

DETAIL PROJECT

2001 - 2003

CONSTRUCTION COSTS

750 000 euros

CONSTRUCTION AREA

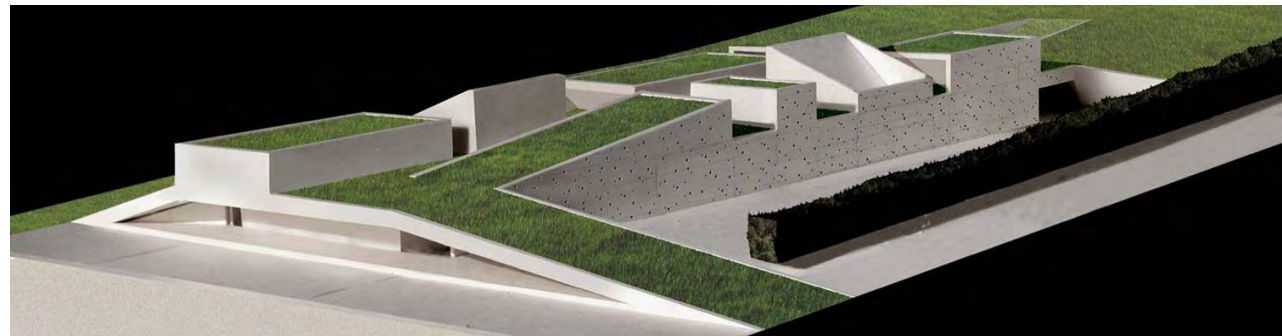
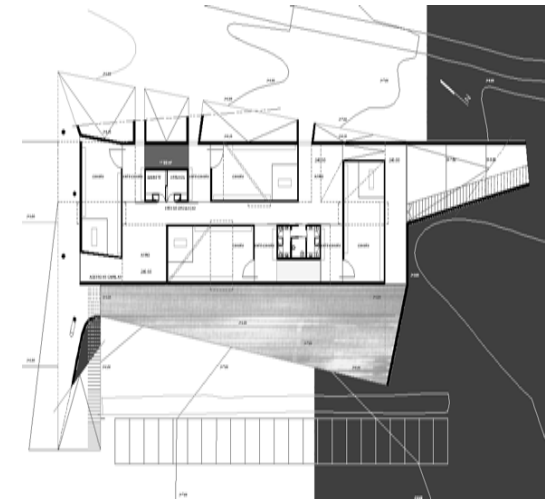
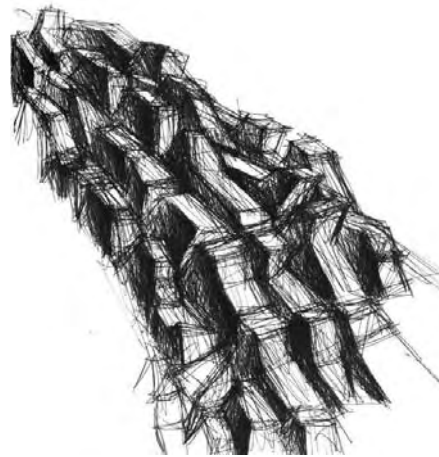
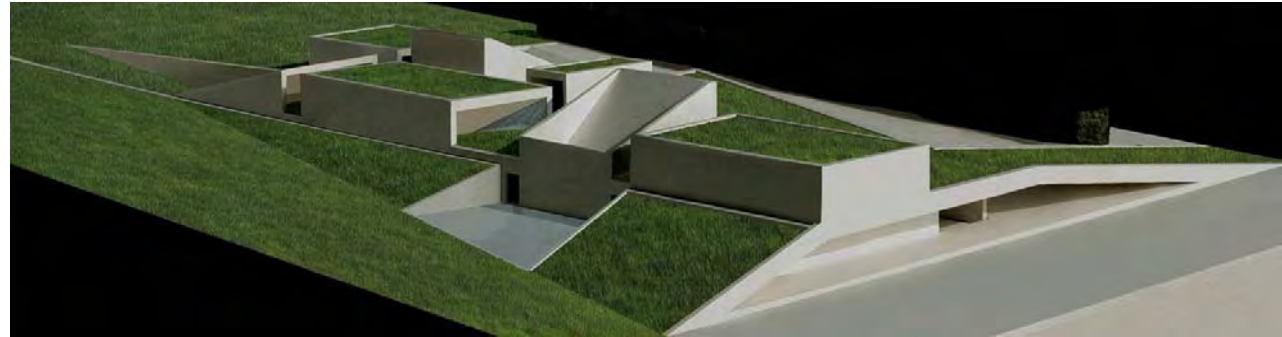
- Interior 900m²
- Exterior 8 000m²

PROJECT

João Santa-Rita

PROJECT INVOLVED

- Structure
- Water and sewer
- Electricity / Communications
- Security
- Air conditioned / Ventilation
- Acoustic
- Thermal
- Mechanical
- Traffic
- Landscape design



OFFICE AND HOTEL COMPLEX

LOCATION / CLIENT

Parque das Nações / Parque Expo, Lisbon

PROGRAM

- 20 000 offices
- 350 rooms hotel
- auditorium
- convention center
- private/public parking

COMPETITION (2001)

Limited Competition (3rd Prize)

CONSTRUCTION COSTS

45 000 000 euros

CONSTRUCTION AREA

- offices 40 000m²
- hotel 40 000m²

PROJECT

João Santa-Rita

PROJECT INVOLVED

- Structure
- Water and sewer
- Electricity / Communications
- Security
- Air conditioned / Ventilation
- Acoustic
- Thermal
- Mechanical
- Traffic
- Landscape design



**INSTITUTE OF COMMUNICATIONS OF
PORTUGAL**

LOCATION

Parque Expo, Lisbon

CLIENT

Parque das Nações

PROGRAM

- offices
- auditorium
- documentation center
- parking

COMPETITION (2001)

Limited competition (2nd Place)

CONSTRUCTION COSTS

9 500 000 euros

CONSTRUCTION AREA

13 000m²

PROJECT

José Santa-Rita, João Santa-Rita

PROJECT INVOLVED

- Structure
- Water and sewer
- Electricity / Communications
- Security
- Air conditioned / Ventilation
- Acoustic
- Thermal
- Mechanical
- Traffic
- Landscape design



**URBAN PARK INFRASTRUCTURES
RESTAURANT AND KIOSK**

LOCATION
Beja, Portugal

CLIENT
Beja Pólis

PROGRAM
- Restaurant
- Terrace
- Services
- Kiosk / Bar

INVITATION

PROJECT
2002/2004

CONSTRUCTION AREA
400 m²

CONSTRUCTION COSTS
500 000 euros

CONSTRUCTION
2003/2004

PROJECT
João Santa-Rita

PROJECTS INVOLVED
- Structure - Water and sewer
- Electricity / Communications
- Security - Air conditioned / Ventilation
- Acoustic - Thermal - Mechanical - Traffic
- Landscape design



CAR PARK AT THE SÃO FRANCISCO CONVENT

LOCATION

Portalegre, Portugal

CLIENT

Portalegre Polis

PROGRAM

- Covered parking for 150 cars
- Outdoor parking for 50 cars

INVITATION

PROJECT

2002/2004

CONSTRUCTION AREA

6 750m²

CONSTRUCTION COSTS

1 450 000 Euros

CONSTRUCTION

2005, ...

PROJECT

João Santa-Rita

PROJECTS INVOLVED

- Structure
- Water and sewer
- Electricity / Communications
- Security
- Air conditioned / Ventilation
- Acoustic
- Thermal
- Mechanical
- Traffic
- Landscape design



**UNDERGROUND CAR PARK
AV. MIGUEL FERNANDES**

LOCATION
Beja, Portugal

CLIENT
Beja Pólis

PROGRAM
- covered parking for 190 cars
- landscape design

INVITATION

PROJECT
2002

CONSTRUCTION AREA
6 000m²

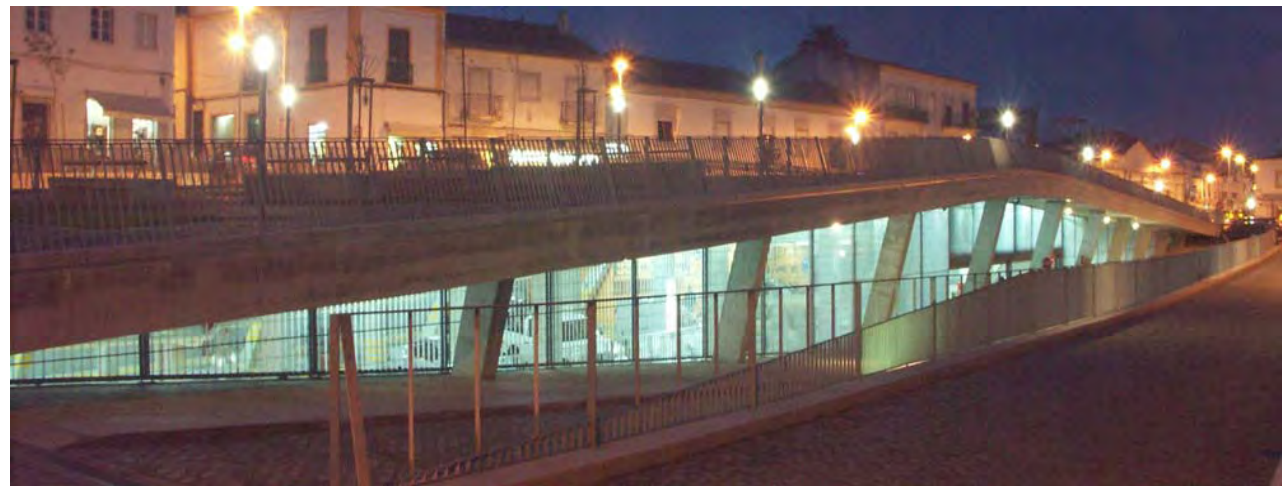
CONSTRUCTION COSTS
2 300 000 euros

CONSTRUCTION
2003/2005

PROJECT
João Santa-Rita

PROJECT INVOLVED

- Structure
- Water and sewer
- Electricity / Communications
- Security
- Air conditioned / Ventilation
- Acoustic
- Thermal
- Mechanical
- Traffic
- Landscape design



HOUSING AND COMMERCIAL COMPLEX

LOCATION

Quinta da Tapada do Matias, Évora, Portugal

CLIENT

Cooperativa Habitévora

PROGRAM

- housing (typologies T1/T2/T3)
- social equipment
- commercial areas

INVITATION

PROJECT

2002/...

CONSTRUCTION AREA

34 800 m²

CONSTRUCTION COSTS

16 521 000 euros

CONSTRUCTION

2003...

PROJECT

João Santa-Rita, Cristina Teixeira

PROJECT INVOLVED

- Structure
- Water and sewer
- Electricity / Communications
- Security
- Air conditioned / Ventilation
- Acoustic
- Thermal
- Mechanical
- Traffic
- Landscape design



OFFICE BUILDING

LOCATION

Oeiras, Portugal

CLIENT

Guedol

PROGRAM

- offices

INVITATION

PROJECT

2003/2004

CONSTRUCTION AREA

- groundfloor

1 000m²

- total area

5 000m²

CONSTRUCTION COSTS

3 750 000 Euros

PROJECT

João Santa-Rita

PROJECTS INVOLVED

- Structure
- Water and sewer
- Electricity / Communications
- Security
- Air conditioned / Ventilation
- Acoustic
- Thermal
- Mechanical
- Traffic
- Landscape design



URBAN PLAN DESIGN

LOCATION

Tomar, Portugal

CLIENT

Tomar Pólis

PROGRAM

- Urban reconversion of Bacelos área (road system, housing, equipment, landscape design)

COMPETITION

Limited Competition (1st Prize)

PROJECT

2003

SITE AREA

180 000 m²

CONSTRUCTION COSTS

3 700 000 Euros

PROJECT

João Santa-Rita

PROJECTS INVOLVED

- Landscape
- Infrastructures
- Acoustic
- Traffic



**OFFICE, COMMERCIAL AND HOUSING
BUILDING**

LOCATION

Luanda, Angola, África

CLIENT

Grupo Siccal

PROGRAM

- Commercial Center
- Office Center
- Apartments
- Health Club

COMPETITION (2004)

Limited Competition

CONSTRUCTION AREA

35 000 m²

CONSTRUCTION COSTS

20 000 000 Euros

PROJECT

- Santa-Rita Arquitectos
- Arq. João Santa-Rita

PROJECTS INVOLVED

- Structure
- Water and sewer
- Electricity / Communications
- Security
- Air conditioned / Ventilation
- Acoustic
- Thermal
- Mechanical
- Traffic
- Landscape design



REFURBISHMENT AND EXTENSION OF A SWIMMING POOLS COMPLEX

LOCATION

Oeiras, Portugal

CLIENT

Energia Líquida

PROGRAM

- Restaurant
- Terrace
- Covered terrace
- Support services

INVITATION

PROJECT

2004/2005

CONSTRUCTION AREA

700 m²

CONSTRUCTION COSTS

1 000 000 Euros

CONSTRUCTION

2005

PROJECT

João Santa-Rita

PROJECTS INVOLVED

- Structure - Water and sewer
- Electricity / Communications
- Security - Air conditioned / Ventilation
- Acoustic - Thermal
- Mechanical - Traffic
- Landscape design



DETAIL PLAN OF ROSSIO DE SÃO BRÁS

LOCATION
Évora, Portugal

CLIENT
Évora Town Hall

PROGRAM
- Underground Car Park
- Commercial Center
- Cultural Facilities

COMPETITION
Public Competition (1st Prize)

PROJECT
2004/...

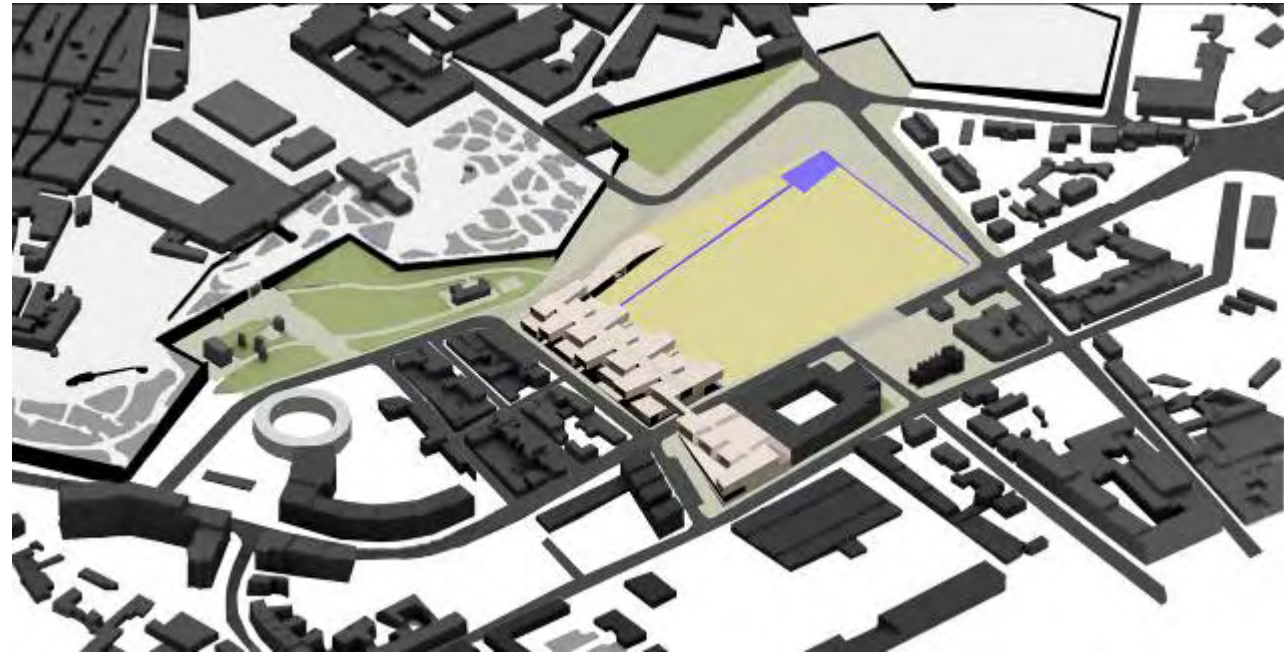
SITE AREA
7 ha

CONSTRUCTION AREA
Commercial, Housing and Hotel - 20 000 m²
Underground Car Park - 30 000 m²

CONSTRUCTION COSTS
30 000 000 Euros

PROJECT
João Santa-Rita, Ana Roxo, Pedro Cardoso

PROJECTS INVOLVED
- Landscape
- Infrastructures
- Acoustic
- Traffic



ALBUFEIRA

LOCATION

Albufeira, Portugal

CLIENT

Domurbanis

PROGRAM

116 apartamentos Aparthotel
50 apartments
4000 m² – Commercial
Car parking – 300 places

INVITATION

PRELIMINARY PROJECT

2005

CONSTRUCTION AREA

19 000 m²

CONSTRUCTION COSTS

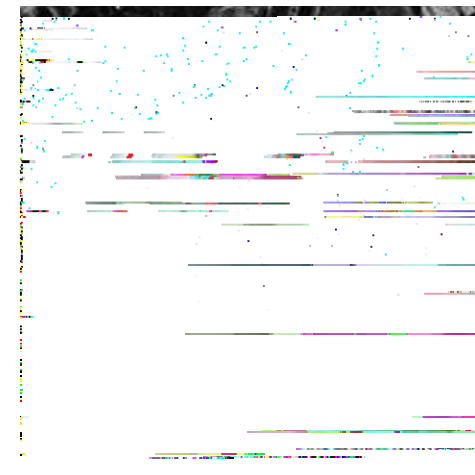
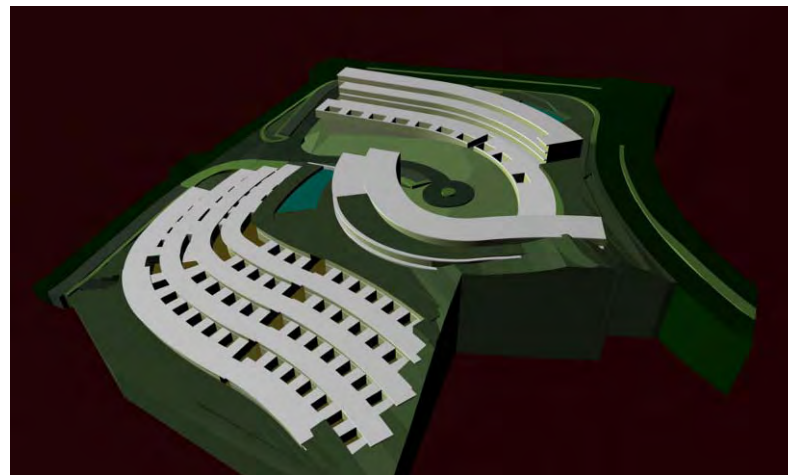
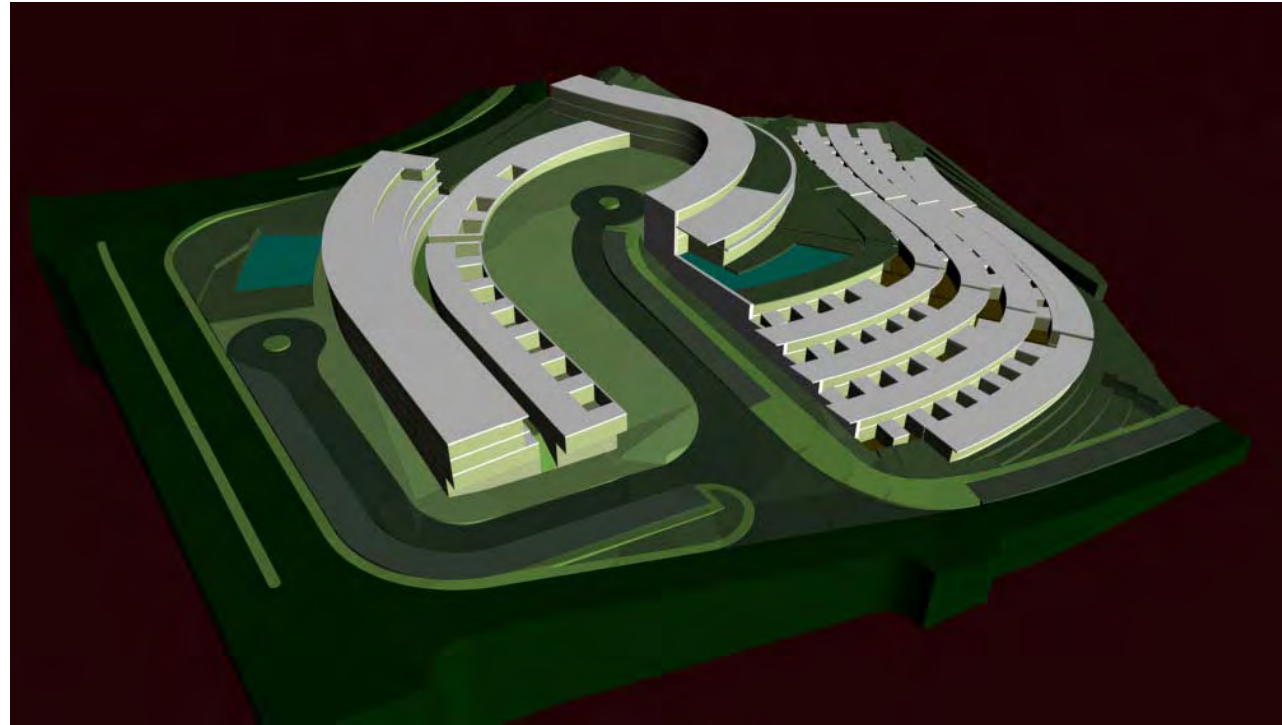
14 000 000 Euros

PROJECT

João Santa-Rita, Duarte Nuno Simões,
Nuno Simões

PROJECTS INVOLVED

- Structure
- Water and sewer
- Electricity / Communications
- Security
- Air conditioned / Ventilation
- Acoustic
- Thermal
- Mechanical
- Traffic
- Landscape design



PRAIA DOS MOINHOS MARINA

LOCATION

Praia dos Moínhos, Alcochete

CLIENT

Alcochete Town Hall

PROGRAM

Marina
Hotel
Commerce and restaurants

INVITATION

PRELIMINARY PROJECT

2005

CONSTRUCTION AREA

Un. Hotel – 7.500m²
Infrastructures of support – 2.750m²

CONSTRUCTION COSTS

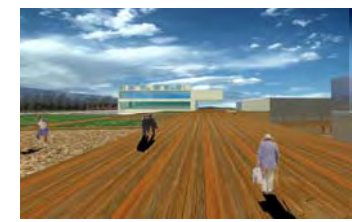
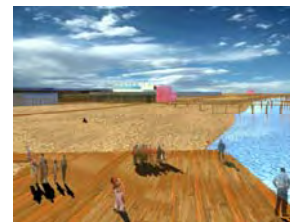
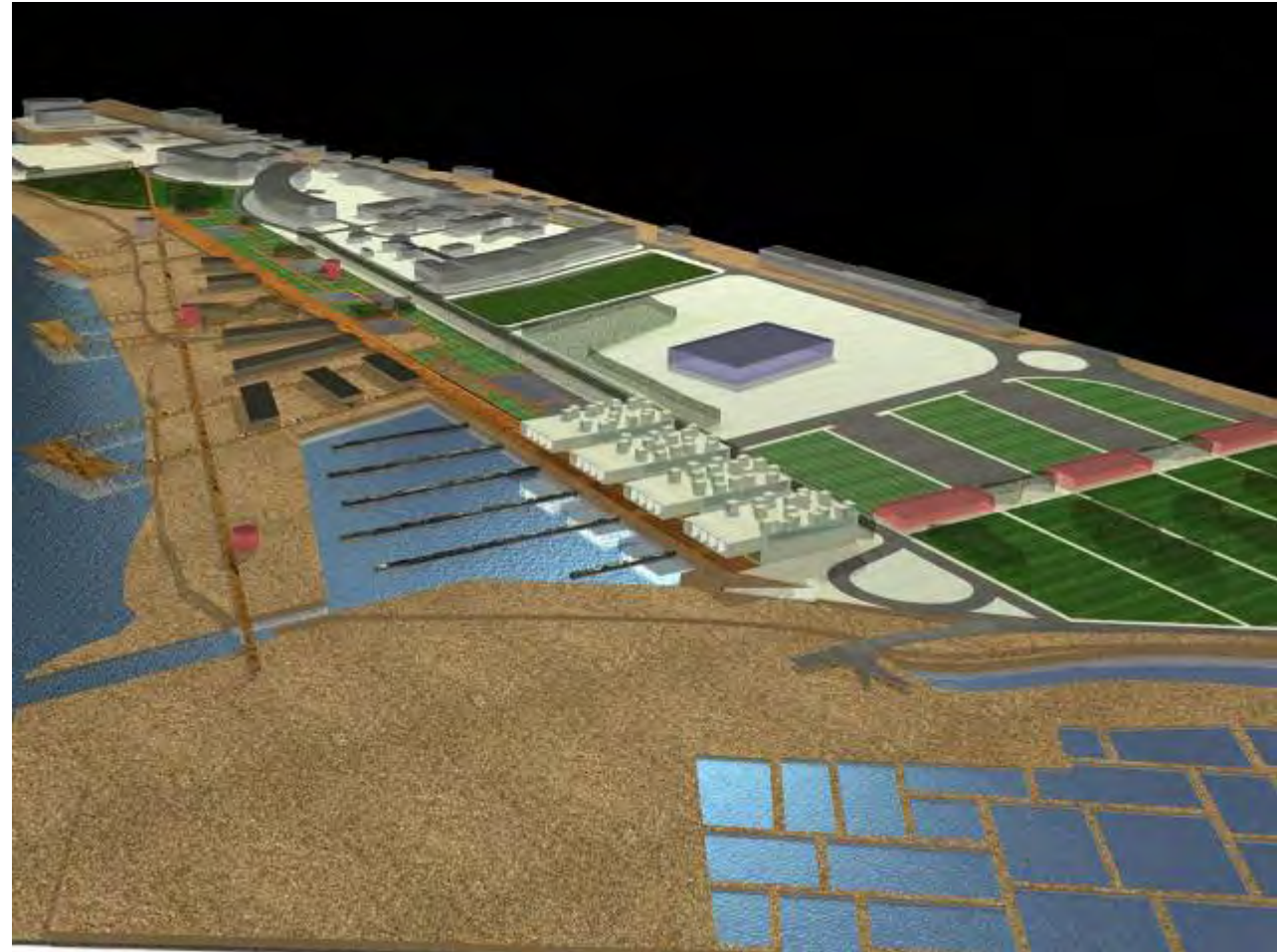
(CONFIDENTIAL)

PROJECT

João Santa-Rita

PROJECTS INVOLVED

- Structure
- Water and sewer
- Electricity
- Landscape design



ALTO DA AJUDA PLAN

LOCATION

Ajuda, Lisboa, Portugal

CLIENT

EPUL

PROGRAM

- Housing
- Commercial
- Offices

INVITATION

PROJECT

2006, ...

SITE AREA

48000 m²

CONSTRUCTION AREA

Housing, Commercial and Offices – 33000 m²
Car Parking – 40000 m²

PROJECT

João Santa-Rita

PROJECTS INVOLVED

- Landscape
- Infrastructures
- Acoustic
- Traffic
- Structure
- Water and sewer
- Electricity / Communications
- Security
- Air conditioned / Ventilation
- Acoustic
- Thermal
- Mechanical

