

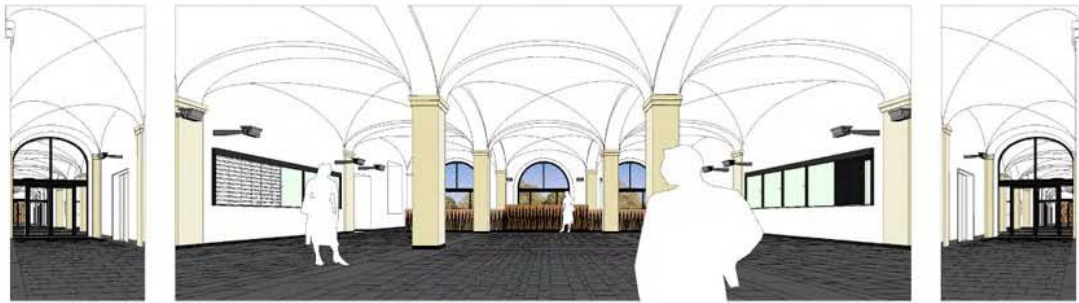


MICHAEL RAGALLER | DIPL.-ING. FREIER ARCHITEKT

Esslingen, ehemaliges Rathaus

Umbau zweier Barockgebäude zum Amtsgericht
Projektleitung bei Prof. Wolfgang Stübler 2000-2003







Plochingen, Bahnhof

Umbau und Sanierung eines Gebäudes von Theodor Fischer
Projektleitung bei Prof. Wolfgang Stübler 1998 - 1999









Ellwangen, Lichtspieltheater

Neubau eines Kinos

Projektleitung bei Prof. Wolfgang Stübler 1999 - 2000







Eppingen, Rathaus

Neubau und Umbau eines Rathauses

Projektleitung bei Lederer, Ragnarsdóttir, Oei 2005 - 2007











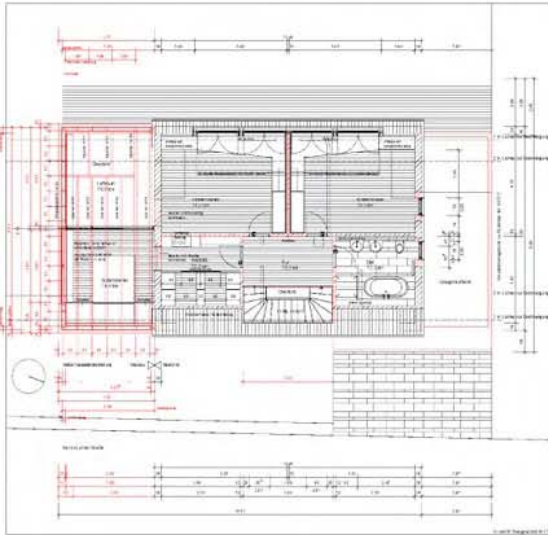
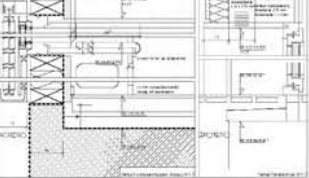
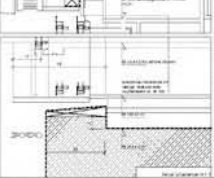
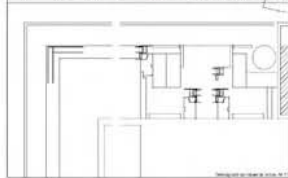
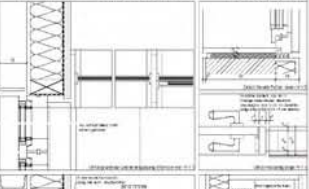
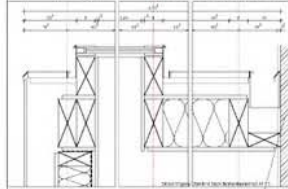
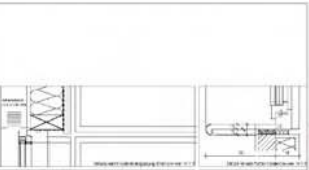
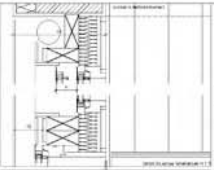
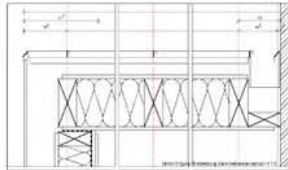
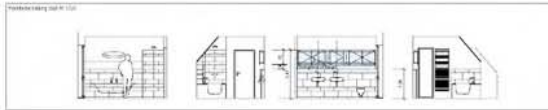
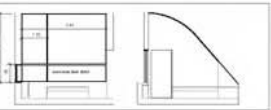
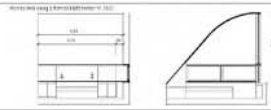
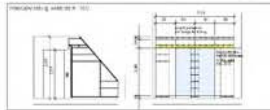
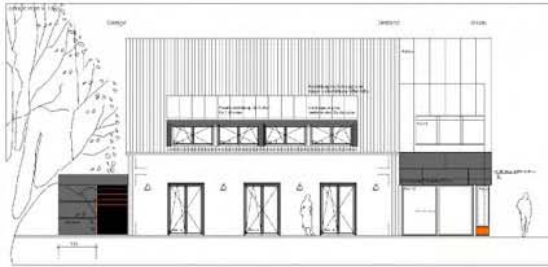
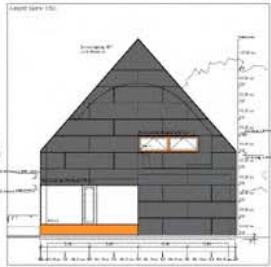
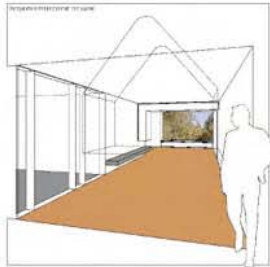




Crailsheim, Haus Meiser

An- und Umbau eines Wohnhauses
LPH 1-9, 2003

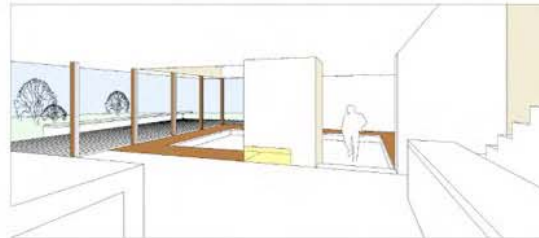
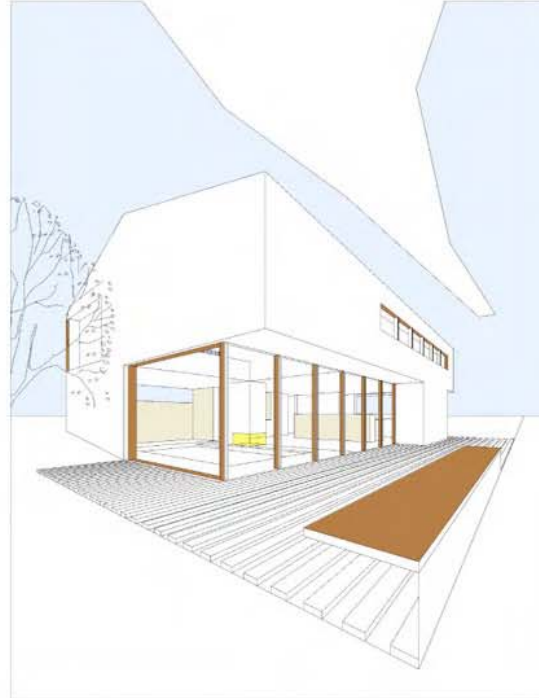
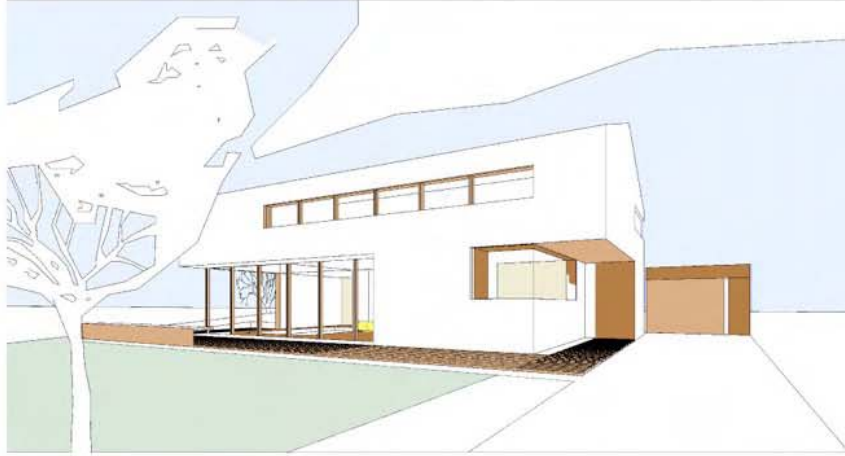






Ingolstadt, Haus Dr. Koser

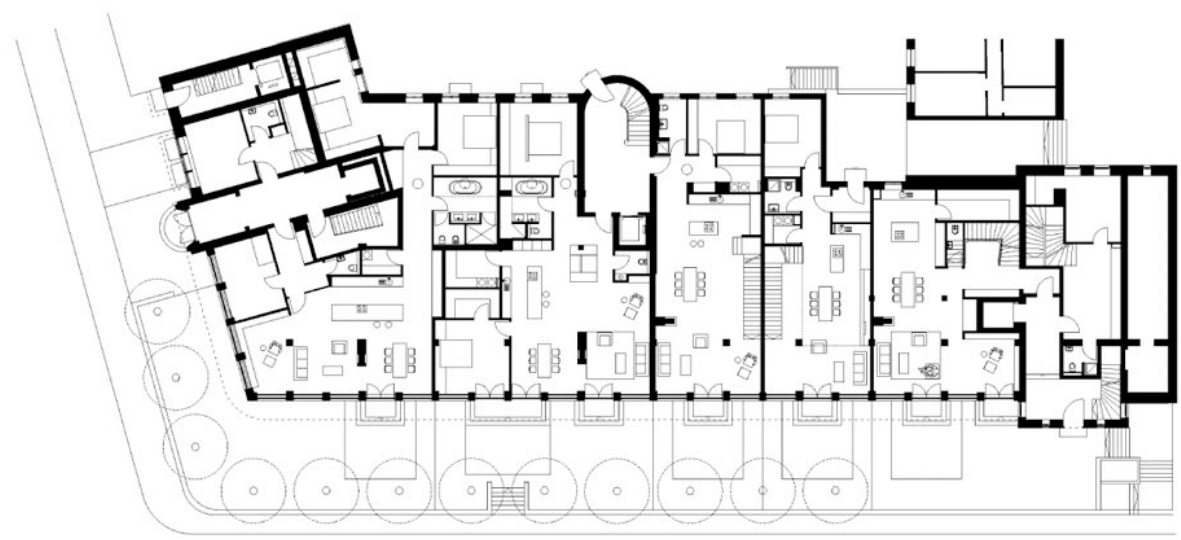
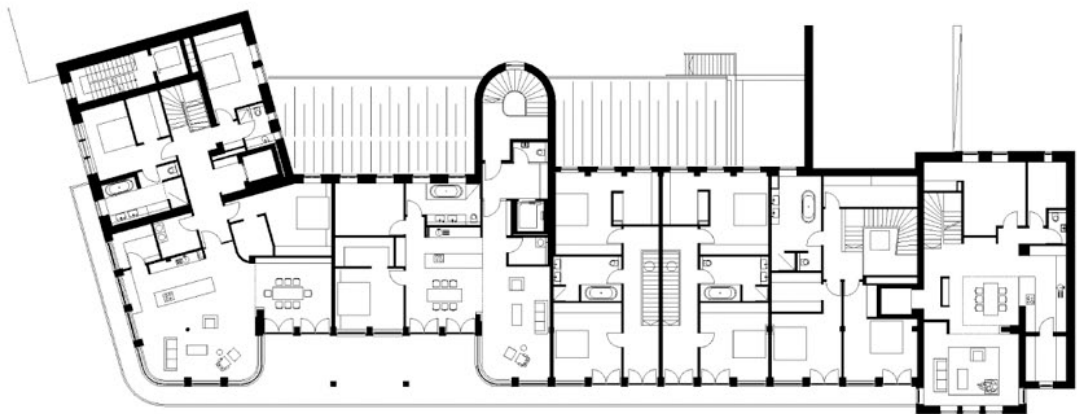
Neubau eines Wohnhauses
LPH 1-5, 2003



Schönblick, Stuttgart

Umbau und Nutzungsänderung
LPH 1-9, Fertigstellung 2010





Generationenwohnen in Sigmaringen

Neubau

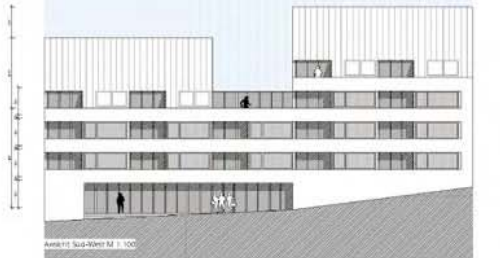
LPH 1-9, Fertigstellung 2010



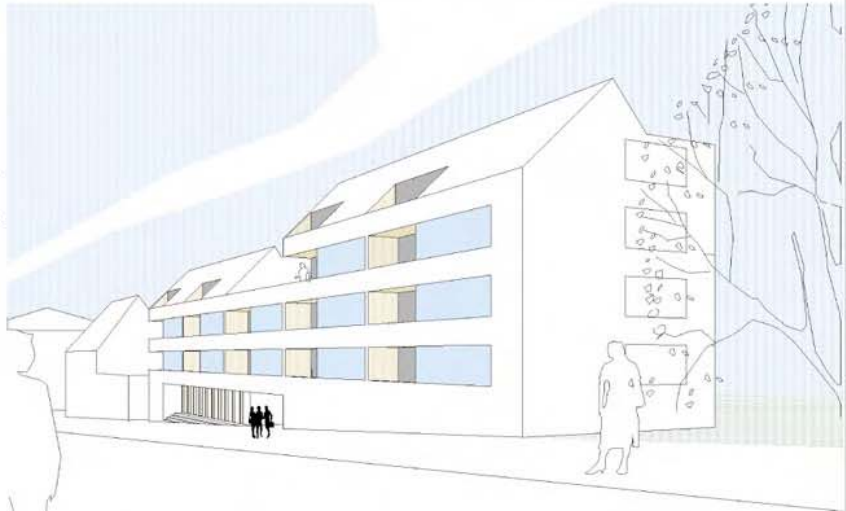
Grundriss 400 M 1:100



Grundriss 100 M 1:100



Auschnitt Süd-West M 1:100



Perspektive Süd-West



Antonstraße

10 Meter

Josefweberstraße